

LTG Mifare Card Door Lock

LTG Mifare Card Door Lock System

- Strong materials used for high security protection
 - Outer body, latch, dead-bolt and moving parts are all made by stainless steel
 - Strong mortise compliance with ANSI156.13 and fire test no. R06K01
 - PVD treatment prevent the surfaces from decaying and rusting
- Low set up and running cost
 - Standalone operation without any cabling works and allows future expansion with limited cost
 - Mifare keycards can be reprogrammed and reused
- Designed for offices, clubhouses, schools / universities, exhibition center, shopping malls and hotels where high security access control is required



LTG Lock Unique Features

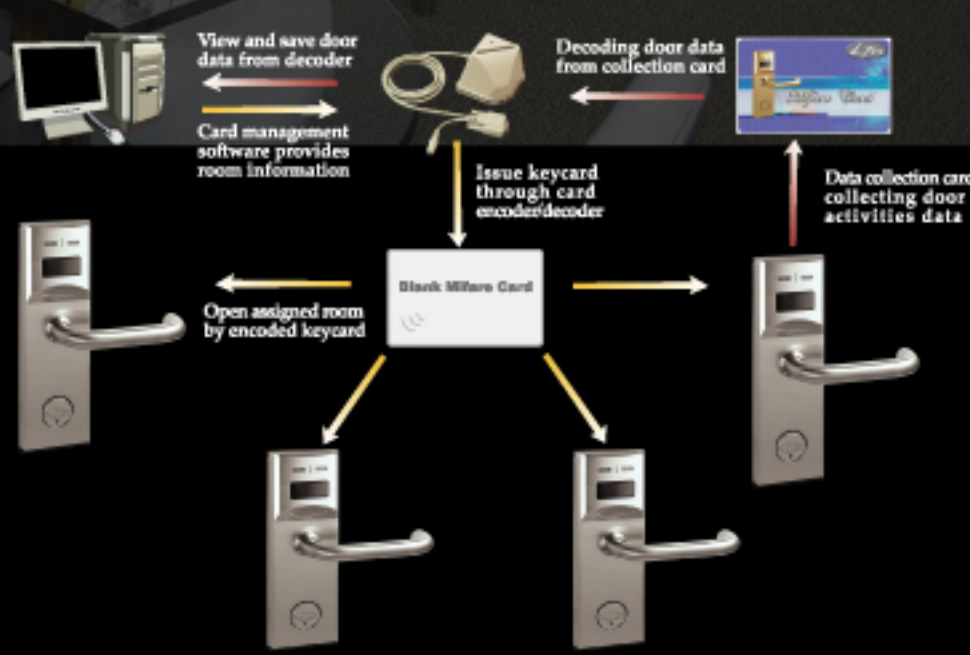
- PVD coating that makes daily cleaning become easy task
- Large memory of 864 records can be stored
- Door records include the use of mechanical key
- Emergency keycard is available
- Strong Mortise to protect from hard breaking
- Self checking dual clock function
- Alarming function to prevent door from being not fully closed by accident
- LED indication gives "Do not Disturb" signal for room being occupied

Major Specifications

- Operating voltage: DC 6V (AA size Alkaline battery X 4)
- Life-span of batteries: Last for around 15,000 times operation or 1 year
- Power consumption: Standby <12mA ; Operating 100-150mA
- Low voltage indication: When the batteries voltage dropped below 4.8V, red LED on the lock will flash and the lock can still be operated for around 10 days

Door Access Keycard

- Leading industry Mifare IC card standard from Philips
- Data retention of more then ten years, Keycard can be rewritten for 100,000 times
- Proximity : max 13cm read distance
- Capacity : 1K digits EEPROM



303 Technology Limited
 Address : 11/F, 68 Yee Wo Street,
 Causeway Bay, Hong Kong
 Tel : (852) 2837 3121
 Fax : (852) 2504 4116
 Email : info@303.com.hk
 Web site : http://www.303.com.hk/